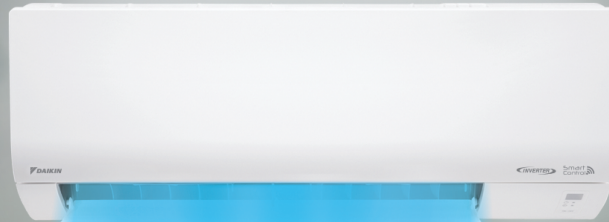
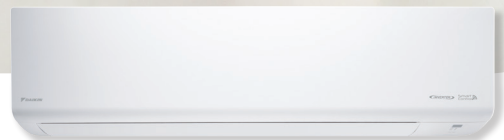
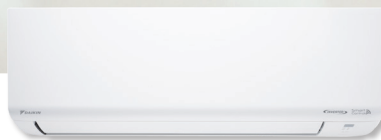
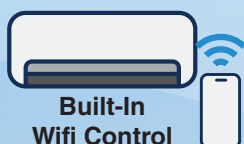


**FTKE Series****R32 Inverter  
Wall Mounted****FTKE Inverter Wall Mounted**

# Features



## Econo Mode

This mode limits the maximum power consumption. It improves operating efficiency while fulfilling basic human comfort needs.



## Low/High Voltage Shield (Super PCB)

All electrical components in indoor and outdoor units are designed for extreme durability. The printed circuit boards can easily handle large variations of voltage (150V-440V) and increase operation durability.



## Outdoor PCB protection (Lizard Guard)

The Lizard Guard function is a protective feature built into the outdoor unit, minimizing damage to the inverter board and safeguarding essential components. This innovative design ensures the longevity and reliability of your air conditioning system.

\* Only available for RKE25 & RKE35.



## Compact & Easy To Use Controller

- Prominent temperature display.
- Real-time clock display. (ARC486A1 only)
- Easily accessible buttons.
- Wired controller option - SHIRO Wired Remote (BRC51D61)



ARC486A1



BRC51D61



## Anti-Corrosion Treatment of Outdoor Heat Exchanger Fins

The Outdoor units come with anti-corrosion properties with its Blue fin heat exchanger.



RKE25-71



## GO DAIKIN

This built-in network adaptor (AWM61A01) and the app turn a smartphone into a remote controller that can be used inside or outside the home. Together, they help to not only save energy and maintain comfort but also eliminate any worries of forgetting to turn off your air conditioner! (Certain app functions are optional.)



## Gin-Ion Blue Filter

This filter is treated with a positively charged silver ion, which efficiently draws viruses onto its surface and decomposes up to 99.9% in 2 hours. On top of that, this filter can deactivate bacteria and inhibit fungal growth on its surface to improve the quality of indoor air for a healthier lifestyle. The filter delivers consistent performance for around a year if filter is cleaned once every 2 weeks.

Substances can be collected and deactivate by filter:



Viruses



Bacteria



Allergen



Mould



Odour



GO DAIKIN

## GO DAIKIN

In-Home & Out-Of-Home Function  
Allows You To Control Your AC  
At Anywhere Anytime.

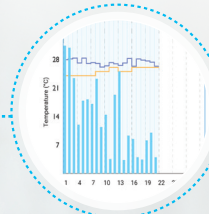


Scan the QR code to find out more!



## GO CONVENIENCE

- In-home & Out-of-home function allows you to control your AC at anywhere anytime.
- Weekly scheduling allows you to set your AC at your preferred timing at a weekly basis.



## GO SAVE

- Statistical energy usage graphs that allows you to monitor and keep track of your daily energy usage to ensure an efficient AC operation.
- With this, greater savings can be achieved as you can now smartly monitor your AC energy consumption!

\* The energy consumption values are based on averaged data; Monetary values is calculated based on domestic tariff A at 21.8sen/kWh.



## GO COMFORT

- Different operational modes allows you to enjoy the different kinds of cooling experience.
- Advance control\* that provides you with even more cooling options for a better cooling comfort.

\* May vary depends on model availability



## GO SHARE

- User control sharing easily allows you to share your AC controls with your family members through a simple QR code scanning.
- You can unbind the controls or restrict certain app functions of the AC from your family members at any time you desire.



# GO DAIKIN Configuration



## Required for Operation:



## Available At:



## 3 Simple Steps For Unit Pairing

### STEP 1



### STEP 2



### STEP 3



Scan QR code to see GO DAIKIN setup video

## ENJOY 2 YEARS **FREE\***1 UPGRADE TO PRO ON US

Function List	Standard RM0.00	Pro RM11.99 Per year
Energy Usage Monitoring		✓
Weekly Scheduling		✓
Countdown Timer		✓
Out-Of-Home AC		✓
Geofencing <sup>*2</sup> (NEW)		✓
Indoor/Outdoor Temperature Monitoring		✓
Standard Control Functions <sup>*3</sup>	✓	✓
User Control Sharing to Family & Friends	✓	✓
In-Home AC Control	✓	✓
Auto Error Code Detection	✓	✓
Voice control (Alexa, Google Home)	✓	✓

### Smart Control Subscription:

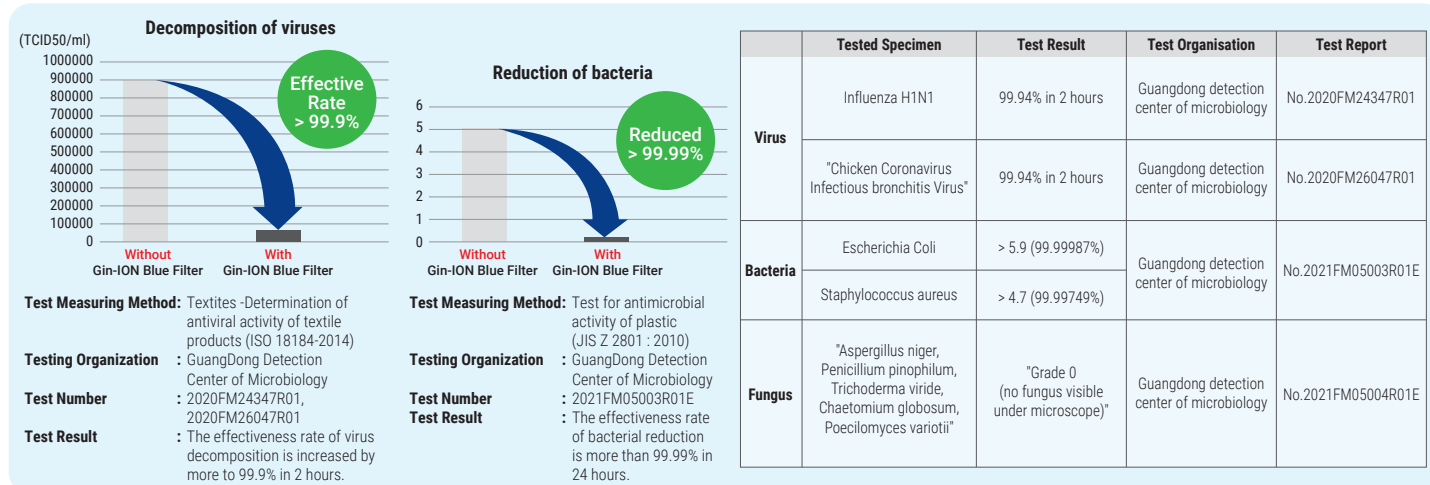
- Free 2 years upgrade to Smart Control Pro upon first time successful pairing to network adaptor (AWM61A01). Package will switch back to Smart Control Standard (FREE) after 2 years. User can choose to upgrade to Smart Control Pro with subscription of RM 11.99 yearly per air conditioner.
- Geofencing lets your AC automatically turn on when you get home and off when you leave. You can easily set and adjust the distance to match your needs.
- Function includes: On/Off, Operation Mode, Fan Swing, Fan Speed, Powerful Mode, Quiet Mode, Sleep Mode.

### Go Daikin App:

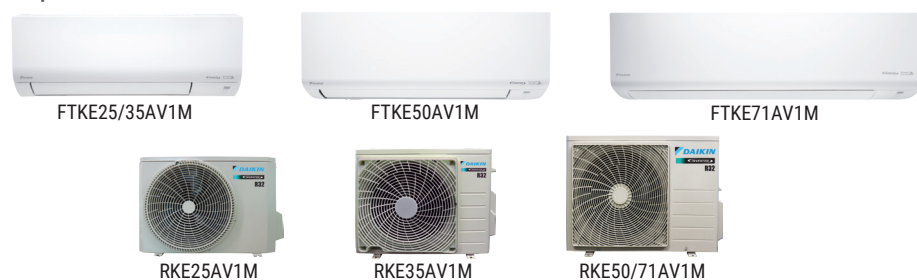
- An Internet connection through mobile data or WiFi network is required to use Smart Control function.
- Connectivity of App to AC will depend on the effective coverage area of your Local Area Network (LAN).
- This device supports DHCP (Dynamic Host Configuration Protocol) only. Ensure that your router has DHCP server option function activated before pairing.
- The controllable functions and features may differ depending on the model.

## Gin-ION Blue Filter Test Result

The Gin-ION Blue Filter has been tested and confirmed to decompose viruses, bacteria, and inhibit fungal growth on the filter surface.



## Specification



FTKE25/35AV1M



FTKE50/71AV1M

Model name	Indoor unit	Wireless	FTKE25AV1MF9	FTKE35AV1MF9	FTKE50AV1MF9	FTKE71AV1MF9
		Wired	FTKE25AV1MW9	FTKE35AV1MW9	FTKE50AV1MW9	FTKE71AV1MW9
	Outdoor unit		RKE25AV1M9	RKE35AV1M9	RKE50AV1M9	RKE71AV1M9
Capacity	Rated	kW	2.64 (1.03 - 2.70)	3.60 (1.20 - 3.75)	5.28 (1.64 - 5.42)	7.03 (1.93 - 7.18)
	(Min - Max)	Btu/h	9,000 (3,500 - 9,200)	12,300 (4,100 - 12,800)	18,000 (5,600 - 18,500)	24,000 (6,600 - 24,500)
Power supply			1 phase, 220-240 V, 50 Hz (Power to indoor)			
Running current	Rated (Min - Max)	A	4.00 (1.65 - 4.39)	5.52 (1.75 - 5.88)	7.29 (2.41 - 7.52)	9.49 (2.40 - 10.1)
Power consumption		W	890 (255 - 980)	1,245 (255 - 1,330)	1,650 (420 - 1,700)	2,160 (380 - 2,300)
CSPF		Wh/Wh	4.20	4.20	4.57	4.20
Energy rating			3 star		4 star	
Heat insulation			Both liquid and gas piping			
Indoor unit			FTKE25AV1M9	FTKE35AV1M9	FTKE50AV1M9	FTKE71AV1M9
Airflow rate	H	cfm	340	350	430	640
Sound pressure levels	H / M / L / Q	dB(A)	39 / 33 / 26 / 21	40 / 35 / 28 / 23	42 / 39 / 32 / 29	43 / 41 / 36 / 30
Dimensions	H x W x D	mm	280 x 730 x 213		288 x 770 x 234	297 x 990 x 273
Unit weight		kg	8.0	8.5	9.5	13.0
Outdoor unit			RKE25AV1M9	RKE35AV1M9	RKE50AV1M9	RKE71AV1M9
Refrigerant		Type	R32			
Sound pressure levels	H	dB(A)	48		52	
Dimensions	H x W x D	mm	460 x 650 x 240	550 x 675 x 284	615 x 845 x 300	
Unit weight		kg	17.0	22.0	35.0	37.0
Piping connection	Liquid	mm	ø6.35			
	Gas		ø9.52		ø12.70	
Chargeless pipe length		m	7.5			
Maximum pipe length			20		30	
Maximum height difference			15		20	
Heat Exchanger		Type	Hydrophillic Blue Fin			

### Remarks:

1. Due to product innovation, all specifications are subjected to change by the manufacturer without prior notice.
2. All units are being tested and comply to ISO5151.
3. Nominal cooling capacity are based on the conditions: 27°C DB / 19°C WB indoor and 35°C DB outdoor ; piping length 7.5m.
4. Sound pressure levels are measured in anechoic chamber according to JIS C 9612 standard. During actual operation, sound pressure level will be higher as a result of room specification condition.
5. The Gin-ION Blue Filter is not a medical device. Benefits shown are only effective for substances which are directly attached on the filter surface.
6. Wireless model will be supplemented with a Wireless Remote Controller (ARC486A1) and a built-in network adaptor (AWM61A01).
7. Wired model will come with only a SHIRO Wired Remote Controller (BRC51D61). To enable the Smart Control function, optional NS Splitter (R50044157819) is required.

## DAIKIN MALAYSIA SALES & SERVICE SDN. BHD.

Call Centre: 1300-88-DAIKIN(324546)

198301014326 (109719-M)

Email: customer\_service@daikin.com.my

**Branches:**

• Kedah	Tel: 04-730 5670	• Johor	Tel: 07-557 7788
• Penang	Tel: 04-331 1670	• Pahang	Tel: 09-567 6778
• Perak	Tel: 05-548 2307	• Kelantan	Tel: 09-747 4578
• Negeri Sembilan	Tel: 06-768 8969	• Sabah	Tel: 088-722 194
• Melaka	Tel: 06-288 1133	• Sarawak	Tel: 082-333 299

Website: www.daikin.com.my

Authorized dealer: